



S&D Group elects new Bureau and stands united behind Gianni Pittella as S&D candidate for EP presidentTUTTLIES, Uta | 15/12/2016 | Share it  

Following the re-election of Gianni Pittella last week as president of the S&D Group for the second half of the European Parliament mandate, the S&D Group elected its new Bureau yesterday evening in Strasbourg.

The S&D Group's Bureau co-ordinates its political activity and is made up of the president, nine vice-presidents and the treasurer. Vice-presidents are in charge of specific EU policy portfolios and supervise cross-committee issues. Two others are responsible for the S&D Group's communications and for the co-ordination of parliamentary affairs.

Commenting on the new Bureau, S&D Group president Gianni Pittella said:

"In politically turbulent times, it is fundamental to have a strong and efficient team with whom together we can fight for a fairer Europe.

"I am proud to be the president of our newly-elected Bureau. This Bureau reflects the values we stand for - a strong representation of women in leading positions, a clear geographical balance between East and West, North and South, as well as a fair representation of small and large

member states.

"Over the last weeks our group has taken decisive steps and we are now ready for the mid-term review. With a strong and cohesive backing from our group, I will continue my campaign, together with all democratic and pro-European forces, to be elected as next EP president on 17 January 2017."

The new S&D Group Bureau has 11 members, including the S&D Group president Gianni Pittella (MEP Italy), the treasurer Péter Niedermüller (MEP Hungary), and the following nine vice-presidents:

1. Victor Boştinaru, MEP Romania
2. Udo Bullmann, MEP Germany
3. Tanja Fajon, MEP Slovenia
4. Jeppe Kofod, MEP Denmark
5. Maria João Rodrigues, MEP Portugal
6. Isabelle Thomas, MEP France
7. Elena Valenciano, MEP Spain
8. Kathleen van Brempt, MEP Belgium
9. Josef Weidenholzer, MEP Austria

MEPs INVOLVED



PITTELLA Gianni
gianni.pittella@ep.europa.eu
+ 32 2 284 51 59
+ 33 3 88 17 51 59
<http://www.giannipittella.eu/>



NIEDERMÜLLER Péter
peter.niedermueller@ep.europa.eu
+ 32 2 284 54 68
+ 33 3 88 17 54 68



BOŞTINARU Victor
victor.bostinaru@ep.europa.eu
+ 32 2 284 58 32
+ 33 3 88 17 58 32
<http://victorbostinaru.ro>



BULLMANN Udo
udo.bullmann@ep.europa.eu
+32(0)2 28 45342
+33(0)3 88 1 75342
<http://www.udo-bullmann.de/>



FAJON Tanja
tanja.fajon@ep.europa.eu
+32(0)2 28 45493
+33(0)3 88 1 75493
<http://www.tanja-fajon.si/>



KOFOD Jeppe
jeppe.kofod@ep.europa.eu
+32(0)2 28 45463
+33(0)3 88 1 75463
<http://www.socialdemokraterne.dk/default.aspx?site=jeppekofod>



RODRIGUES Maria João
mariajoao.rodrigues@ep.europa.eu
+ 32 2 284 58 63
+ 33 3 88 17 58 63



THOMAS Isabelle
isabelle.thomas@ep.europa.eu
+ 32 2 284 54 32
+ 33 3 88 17 54 32
<http://www.isabelle-thomas.fr/>



VALENCIANO MARTÍNEZ-OROZCO Elena
elena.valenciano@ep.europa.eu
+32(0)2 28 45846
+33(0)3 88 1 75846

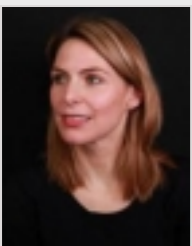


VAN BREMPT Kathleen
kathleen.vanbrempt@ep.europa.eu
+ 32 2 284 54 47
+ 33 3 88 17 54 47
<http://kathleenvanbrempt.be/>



WEIDENHOLZER Josef
josef.weidenholzer@ep.europa.eu
+32(0)2 28 45473
+33(0)3 88 1 75473
<http://www.weidenholzer.eu/>

S&D PRESS CONTACT



TUTTLIES, Utta
utta.tuttlies@ep.europa.eu
+33 3 88 17 29 98
+32 2 284 30 61